

PAX8 Antibody (monoclonal) (M03)**Mouse monoclonal antibody raised against a partial recombinant PAX8.****Catalog # AT3193a****Specification**

PAX8 Antibody (monoclonal) (M03) - Product Information

Application	WB, E
Primary Accession	Q06710
Other Accession	NM_003466
Reactivity	Human, Rat
Host	mouse
Clonality	Monoclonal
Isotype	IgG2b Kappa
Calculated MW	48218

PAX8 Antibody (monoclonal) (M03) - Additional Information**Gene ID** 7849**Other Names**

Paired box protein Pax-8, PAX8

Target/Specificity

PAX8 (NP_003457, 300 a.a. ~ 377 a.a) partial recombinant protein with GST tag. MW of the GST tag alone is 26 KDa.

Dilution

WB~~1:500~1000

E~~N/A

Format

Clear, colorless solution in phosphate buffered saline, pH 7.2 .

Storage

Store at -20°C or lower. Aliquot to avoid repeated freezing and thawing.

Precautions

PAX8 Antibody (monoclonal) (M03) is for research use only and not for use in diagnostic or therapeutic procedures.

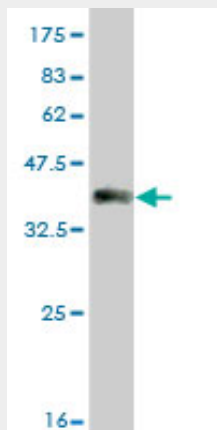
PAX8 Antibody (monoclonal) (M03) - Protocols

Provided below are standard protocols that you may find useful for product applications.

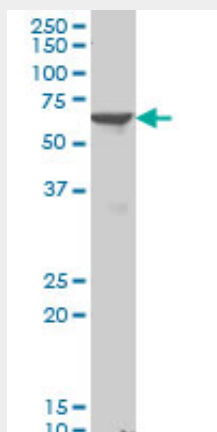
- [Western Blot](#)
- [Blocking Peptides](#)
- [Dot Blot](#)

- [Immunohistochemistry](#)
- [Immunofluorescence](#)
- [Immunoprecipitation](#)
- [Flow Cytometry](#)
- [Cell Culture](#)

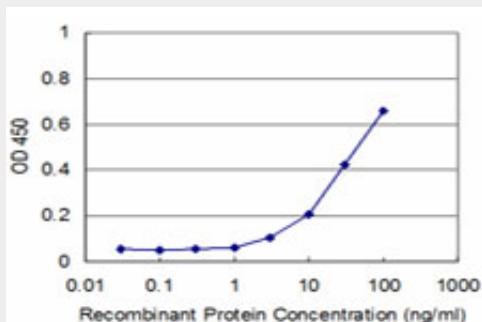
PAX8 Antibody (monoclonal) (M03) - Images



Antibody Reactive Against Recombinant Protein. Western Blot detection against Immunogen (34.32 kDa) .



PAX8 monoclonal antibody (M03), clone 3B11. Western Blot analysis of PAX8 expression in RIN-m5F. (60kD, Endocrinology Vol. 140, No. 10 4651-4658, <http://endo.endojournals.org/cgi/content/full/140/10/4651>)



Detection limit for recombinant GST tagged PAX8 is approximately 3ng/ml as a capture antibody.

PAX8 Antibody (monoclonal) (M03) - Background

This gene encodes a member of the paired box (PAX) family of transcription factors. Members of this gene family typically encode proteins that contain a paired box domain, an octapeptide, and a paired-type homeodomain. This nuclear protein is involved in thyroid follicular cell development and expression of thyroid-specific genes. Mutations in this gene have been associated with thyroid dysgenesis, thyroid follicular carcinomas and atypical follicular thyroid adenomas. Alternatively spliced transcript variants encoding different isoforms have been described.

PAX8 Antibody (monoclonal) (M03) - References

Maternal genes and facial clefts in offspring: a comprehensive search for genetic associations in two population-based cleft studies from Scandinavia. Jugessur A, et al. PLoS One, 2010 Jul 9. PMID 20634891. Mass spectrometry approaches for the redox characterization of protein cysteine residues the case of the transcription factor Pax-8. Scaloni A, et al. Methods Enzymol, 2010. PMID 20513481. Comparative genomics reveals a functional thyroid-specific element in the far upstream region of the PAX8 gene. Nitsch R, et al. BMC Genomics, 2010 May 14. PMID 20470391. PAX8 (+)/p63 (-) immunostaining pattern in renal collecting duct carcinoma (CDC): a useful immunoprofile in the differential diagnosis of CDC versus urothelial carcinoma of upper urinary tract. Albadine R, et al. Am J Surg Pathol, 2010 Jul. PMID 20463571. PAX8 Expression in well-differentiated pancreatic endocrine tumors: correlation with clinicopathologic features and comparison with gastrointestinal and pulmonary carcinoid tumors. Long KB, et al. Am J Surg Pathol, 2010 May. PMID 20414099.